

SAILING INSTRUCTIONS (SI)

44th SINGAPORE OPEN WINDSURFING, WIND & WING FOILING CHAMPIONSHIP 2025

13th February to 16th February 2025

Venue:

Constant Wind Sailing Centre (CWSC), Singapore

11, Changi Coast Walk, Singapore 499740

(this is the official race venue and it overrides the information given in the NoR)

Organized by:

Windsurfing Association Singapore (WAS)



in co-operation with **Singapore Sailing Federation**



Sponsored by



Co-sponsored by



RULES

- 1.1 The event will be governed by the rules as defined in 2025 -2028 Racing Rules of Sailing (RRS).
- 1.2 RRS Appendix B will apply for IQ Foils/ Wind Foils, Techno, RS:One and LT classes
- 1.3 DR21-05 WS Appendix WF dated Mar 2024 will apply for Wing Foils
- 1.4 No national authority prescriptions will apply.
- 1.5 In all rules governing this regatta:
[DP] The penalty for a breach of the class rules may, at the discretion of the protest committee, be less than a disqualification.
[NP] denotes that a breach of this rule will not be grounds for a protest by a board. This changes RRS 60.1.
- 1.6 **[NP]** The infringement of RRS Appendix G, IDENTIFICATION ON SAILS, shall not be grounds for protests by a board.
- 1.7 If there is a conflict between a rule in the Notice of Race (NoR) or Rules of Racing (RRS) and a rule in the Sailing Instructions (SI), the rule in the SI (including amendments) will take precedence.
- 1.8 If there is a conflict between languages, the English text will take precedence.

2 [DP] [NP] ADVERTISING AND ADDITIONAL IDENTIFICATION

- 2.1 Event branding (Tshirts) shall be worn during media interviews and during the prize giving.
- 2.2 Event stickers shall not be cut, trimmed or modified in any way.

3 NOTICES TO COMPETITORS

- 3.1 The Official Notice Board will be online at:
<https://www.racingrulesofsailing.org/decisions/10705/event>
- 3.2 **[NP]** Supplementary physical notice boards are available at Constant Wind Seaports Centre
- 3.3 **[NP]** Supplementary online notice board are available at WAS & SSF Website.

4 CHANGES TO SAILING INSTRUCTIONS

- 4.1 Any change to the SIs will be posted no later than one hour before the warning signal of the race on the day it will take effect, except that any change to the schedule of races will be posted on the day before (11.59pm) it will take effect.

5 SIGNALS MADE ASHORE

- 5.1 Signals made ashore will be displayed on the flag staff located within the compound of Constant Wind Seaports Centre.
- 5.2 When the AP flag is displayed ashore, '1 minute' is replaced by not less than 20 minutes in the Race signal AP. This changes RRS Race Signals AP.
- 5.3 When displayed AP flag ashore is removed, the next signal will be made not less than 1 minute after its removal.
- 5.4 **[DP] [NP]** Flag D with one sound means 'The warning signal will be made not less than 20 minutes after flag D is displayed. Boards shall not launch until this signal is made.'

6 FORMAT OF RACING

- 6.1 The event will consist of single Series for each class.
- 6.2 Classes will race separately.
- 6.3 Men and women from the same class will race together.

7 SCHEDULE

7.1 For Techno 293, Techno 293 Plus, IQ Foil (U17, U19 and Open)

Date	Time	Event
12 th Feb (Wednesday)	1200- 1600	Registration & Equipment Inspection Self-Practice
13 th Feb (Thursday)	1000-1030 1130	Coaches and Skipper's Briefing First possible warning signal
14 th Feb (Friday)	1100	First possible warning signal
15 th Feb (Saturday)	1100	First possible warning signal
16 th Feb (Sunday)	1100 1600 1830	First possible warning signal Last possible warning signal Prize Giving & Farewell Dinner, Venue: Constant Wind

7.2 For Wind & Wing Foil, RS: One and Windsurfer LT Classes

Date	Time	Event
14 th Feb (Friday)	1200 - 1600	Registration & Equipment Inspection Self-Practice
15 th Feb (Saturday)	1000 -1030 1130	Skipper's Briefing First possible warning signal
16 th Feb (Sunday)	1100 1600 1830	First possible warning signal Last possible warning signal Prize Giving & Farewell Dinner, Venue: Constant Wind

- 7.3 [NP] The maximum number of races per day and the maximum number of races per series for each class shall be as follows:

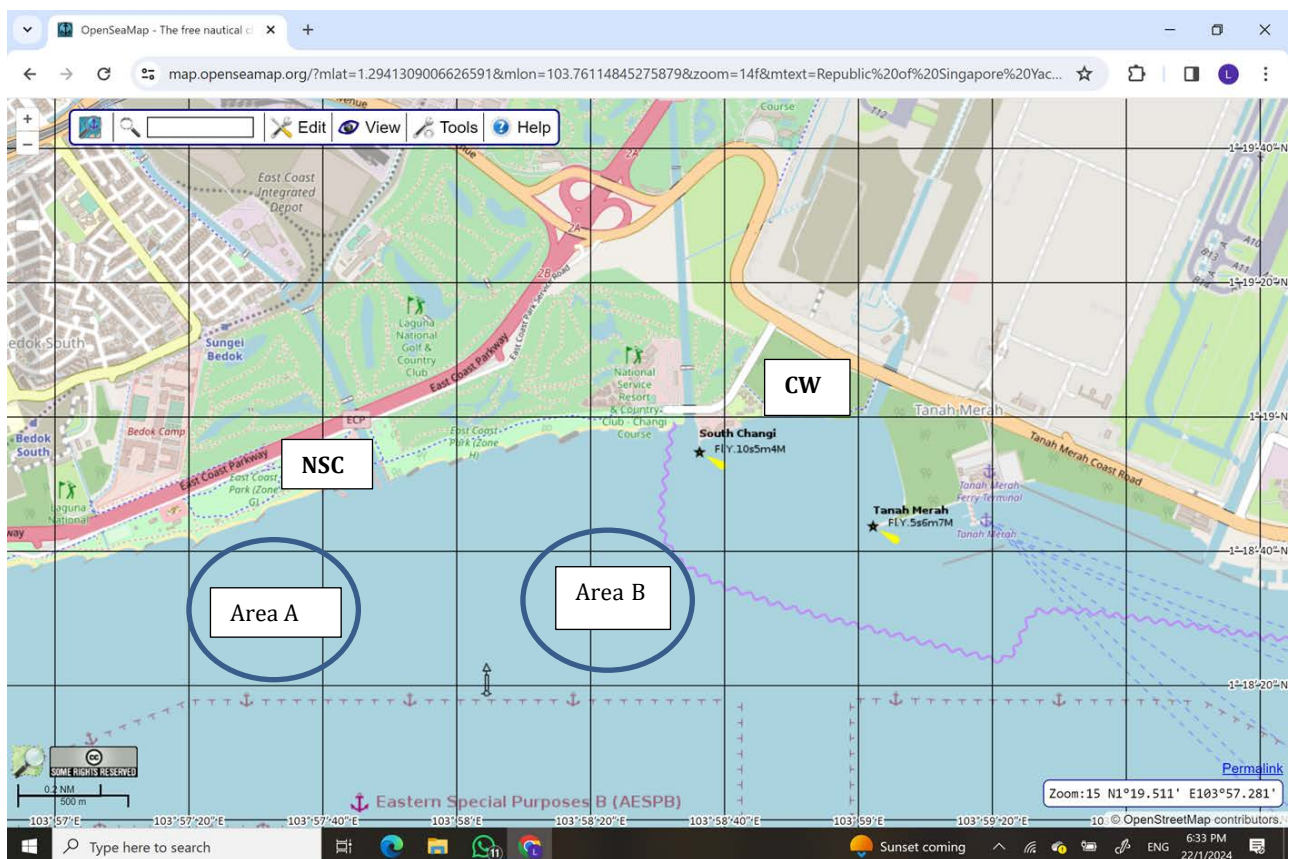
Class	Max number of races per day	Max number of races per series	Remark
Techno 293 & 293 Plus	4	15	Race starts from 13/2/2025 to 16/2/2025 (4 days)
IQ Foil, IQ Foil Junior	8	30	
Wind Foil	10	15	Race starts from 15/2/2025 to 16/2/2025 (2 days)
Wing Foil,	10	15	
Wing X-15	10	15	
RS: One	4	8	
Windsurfer LT	4	8	

8 CLASS FLAGS

- 8.1 For Techno 293, 293+, RS:One, Windsurfer LT, Class flags will be displaying the official class logo/insignia
- 8.2 For IQ Foil and IQ Foil Junior, the official IQ Foil Class Flags will be used
- 8.3 For Wing Foil, a flag with the alphabet 'WG' will be used
For Wing Foil X – 15, the X-15 Class flag will be used
- 8.4 For Wind Foil, a flag with the alphabet 'W' will be used

9 RACING AREA

- 9.1 The racing area is at the sea off the National Sailing Centre (Area A) and off Constant Wind (Area B) as illustrated below.
 - 9.1.1 Area A is for **Wind-foil, Wing Foil, IQ Foil Junior and IQ Foil classes**
 - 9.1.2 Area B is for **RS: One, Techno, and Windsurfer LT classes**



Note:

NSC – National Sailing Centre

CW – Constant Wind Sea Sports Centre

10 THE COURSES

The Courses that will be set are shown in **Appendix A & B**. Information including the course layout, the course signals, and the order in which marks are to be passed are presented.

11 MARKS

- 11.1 The marks used in Course Racing, Slalom Downwind, Slalom Race and Sprint Slalom Race for **Course A** can be found in **Appendix A**
- 11.2 The marks used in Course Racing for **Course B** can be found in Course Layout in **Appendix B**

12 THE START

- 12.1 Starting Procedures shall be as follows, this changes RRS Part 3, 26:

Minutes before Starting Signal	Visual Signal	Sound Signal	Meaning
3	Class Flag Displayed Course Flag Displayed	One	Warning Signal
2	Preparatory Flag Displayed	One	Preparatory Signal
1	Preparatory Flag Removed	One long	One Minute Signal
0	Class Flag Removed	One	Starting Signal

Note:

- The Course and Class Flags displayed for Classes IQ Foil, IQ Foil Junior, Wind Foil and Wing Foil, Wing Foil X-15 and race format can be found in **Appendix A**
 - The Course and Class Flags displayed for Classes Techno 293, 293+, RS:One and Windsurfer LT and race format can be found in **Appendix B**
- 12.2 The Starting Line for Classes IQ Foil, IQ Foil Junior, Wind Foil, Wing Foil & Wing Foil X-15 will be between the staff displaying an Orange flag on the Race Committee boat and a buoy as indicated in Course layout in **Appendix A**
- 12.3 The Starting Line for Classes Techno 293, 293+, RS:One and Windsurfer LT will be between the staff displaying an Orange flag on the Race Committee boat and a buoy as indicated in the Course layout in **Appendix B**
- 12.4 **[DP]** When a starting sequence is in progress, boards whose warning signal has not been made shall avoid the starting area. The starting area is defined as a rectangle 75 meters from the starting line and marks in all directions.
- 12.5 A board starting later than 4 minutes after her starting signal will be scored Did Not Start (DNS) without a hearing.

13 CHANGE OF THE NEXT LEG OF THE COURSE

To change the next leg of the course, the race committee will lay a new mark (or move the finishing line) and remove the original mark as soon as practicable. When in a subsequent change a new mark is replaced, it will be replaced by an original mark.

14 THE FINISH

- 14.1 The Finishing Line for all Courses will be described in SI Appendix A and SI Appendix B course diagrams

15 PENALTY SYSTEM

- 15.1 The penalty for a breach of SI 19.3.1 (Check-Out) will result in a 5 point scoring penalty for the next race completed that racing day and the penalty for a breach of SI 19.3.2 (Check-In) will result in a 5 points scoring penalty for the last race completed that racing day. If only one race is completed, failure to comply with SI 19.3 will incur only a 5 points penalty to that race.

16 TIME LIMITS AND TARGET TIMES

- 16.1 Time limits and target times are in minutes and as follows:

	Time Limit	First Rounding Mark Time Limit	Finish Window	Target Time
T293 & 293+ CLASS RS:ONE CLASS LT CLASS	40	15	15	25
IQ Foil, WindFoil, WingFoil & X-15 (Course Racing – Wind speed > 10 knots)	20	5	10	15
IQ Foil, WindFoil & WingFoil & X-15 (Slalom Downwind & Slalom Race – Windspeed > 7 knots)	10	2	5	5
IQ Foil, Windfoil & WingFoil & X-15 (Sprint Slalom – Windspeed > 7 knots)	6	2	3	3

- 16.2 [NP] If no board has passed the first rounding Mark within its time limit, the race will be abandoned.
- 16.3 Failure to meet the target time will not be grounds for redress.
- 16.4 Boards failing to finish within the time stated in the Finish Window, after the first board in that class sails the course and finishes, will be scored Did Not Finish (DNF).

17 PROTESTS AND REQUESTS FOR REDRESS

- 17.1 The protesting board shall inform the race committee of the boat/s being protested at the finishing line immediately after finishing or as soon as practicable after she retires.
- 17.2 All protest or request for redress shall be done on-line at :
<https://www.racingrulesofsailing.org/decisions/10705/event>
Protest for redress or reopening shall be submitted there within the protest time limit.

- 17.3 For each class, the protest time limit is 60 minutes after the last board has finished the last race of the day or the race committee signals no more racing today, whichever is later.
- 17.4 Notices will be posted online (see SI 17.1) no later than 30 minutes after the protest time limit to inform competitors of hearings in which they are parties or named as witnesses. Hearings will be held online or in the Jury Room located at the Constant Wind Seaports Centre Conference Room, based on the information provided in the above link (see 17.1)
- 17.5 Notices of protests by the race committee, technical committee or protest committee will be posted to inform competitors

18 SCORING

- 18.1 Scoring will be according to the **RRS Appendix B (Windsurfing Fleet Racing Rules)**, except as amended below for discards.
- 18.2 When fewer than 4 races have been completed, a board's series score shall be the total of her race scores.
- 18.3 When 4 to 7 races have been completed, a board's series score shall be the total of her race scores excluding her worst score.
- 18.4 When 8 to 14 races have been completed, a board's series score shall be the total of her race scores excluding her two worst scores.
- 18.5 When 15 or more races have been completed, a board's series score shall be the total of her race scores excluding her three worst scores.

19 [DP][NP] SAFETY REGULATIONS

- 19.1 A competitor that retires from a race shall notify the race officer stationed at the comm boat as soon as possible and within the protest time limit.
- 19.2 Competitors not racing for any of the racing days shall inform the race office.
- 19.3 Check-Out and Check-In Procedures:
 - 19.3.1 Before launching on each scheduled racing day, each competitor shall individually Check-Out, by personally signing on the forms provided at the race control office.
 - 19.3.2 Upon returning to shore after racing, each competitor shall individually Check-In, by personally signing on the forms provided at the race control office, as soon as possible but no later than the protest time limit.

20 [DP][NP] EQUIPMENT & REPLACEMENT OF EQUIPMENT

- 20.1 For IQ Foil, sailors may use either the previous standard sail size (9m for men or 8m for women) OR the new standard sail size (8 m for men and 7.3 m for women)
- 20.2 Substitution of damaged or lost equipment will not be allowed unless authorised by the technical committee.
- 20.3 **Replacement ashore:** Requests for substitution of damaged or lost equipment shall be made in writing on a form available at the race control and delivered there for consideration. Any request shall be made at the first reasonable opportunity.
- 20.4 **Replacement afloat:** When an item of equipment is damaged or lost shortly before a race and is replaced, the competitor shall notify the race committee before the warning signal. As soon as practicable after coming ashore and within the protest time limit, the competitor shall comply with SI 20.2 and the replaced item shall be presented to the technical committee.

21 OFFICIAL VESSELS

- 21.1 Race Committee & Safety vessels will display a white flag with letter "A" in black.
- 21.2 The Jury vessels will display a white flag with the letter "J" in black.

22 [DP] SUPPORT VESSELS

- 22.1 Support vessels shall be registered with the organising authority (OA) at the race office and shall be required to comply with local legislation. Limited charter may be available.
- 22.2 All support vessels shall also clearly display at all times whilst afloat a Green Flag with a letter which will be issued daily from the Race Control.
- 22.3 Support vessels with team leaders, coaches and other support personnel shall stay 100m outside areas where boards are racing from the time of starting sequence until all boards have finished, or the race committee signals a postponement, general recall or abandonment.

23 [NP] TRASH DISPOSAL

Competitors shall not put trash into the water. Trash may be placed aboard support and race committee vessels.

24 [DP][NP] RADIO COMMUNICATION

- 24.1 While on the water, a competitor shall not carry equipment capable of making radio transmissions or receiving radio communications, except for equipment provided by the organising authority. This restriction also applies to mobile telephones.
- 24.2 For purposes of safety, coaches may monitor the race committee working channel, but cannot transmit on this channel except in the case of an emergency.

25 PRIZES

Prizes will be awarded according to the information on the Notice of Race.

26 DISCLAIMER OF LIABILITY

Competitors participate in the event entirely at their own risk, see RRS 3 - Decision to Race. The organising authority or any of their officials or representatives or the sponsors or their officials or representatives will not accept any liability for material damage or personal injury or death sustained in conjunction with or prior to, during or after the event.

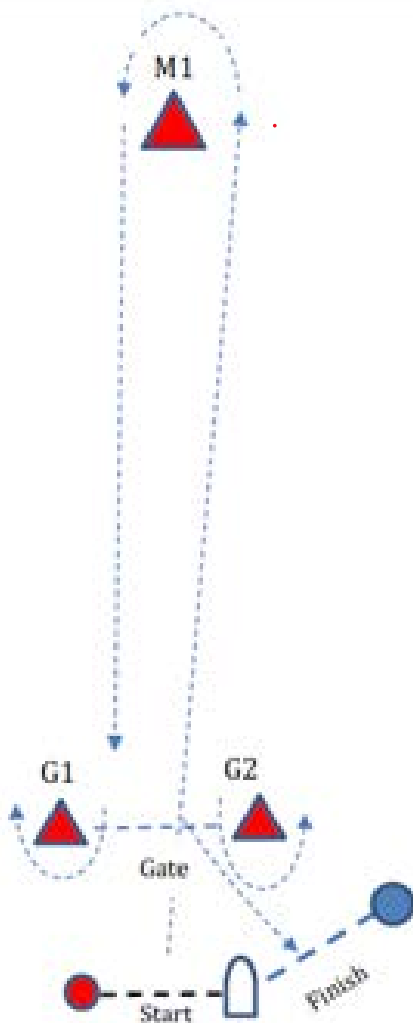
27 INSURANCE

Each participating competitor shall have valid third-party liability insurance.

APPENDIX A : Course Racing

Location: Area A

Class: IQ Foil, IQ Foil Jr, WindFoil, WingFoil & X-15 Wing Foil



Signal	Marking Rounding Order
Class Flag + Pennant 2	Start (Boat & Red Spherical Buoy) – M1 – Gate – M1 – Gate – Finish (Boat & Blue Spherical Buoy)
Class Flag + Pennant 3	Start (Boat & Red Spherical Buoy) – M1 – Gate – M1 – Gate – M1 – Gate – Finish (Boat & Blue Spherical Buoy)

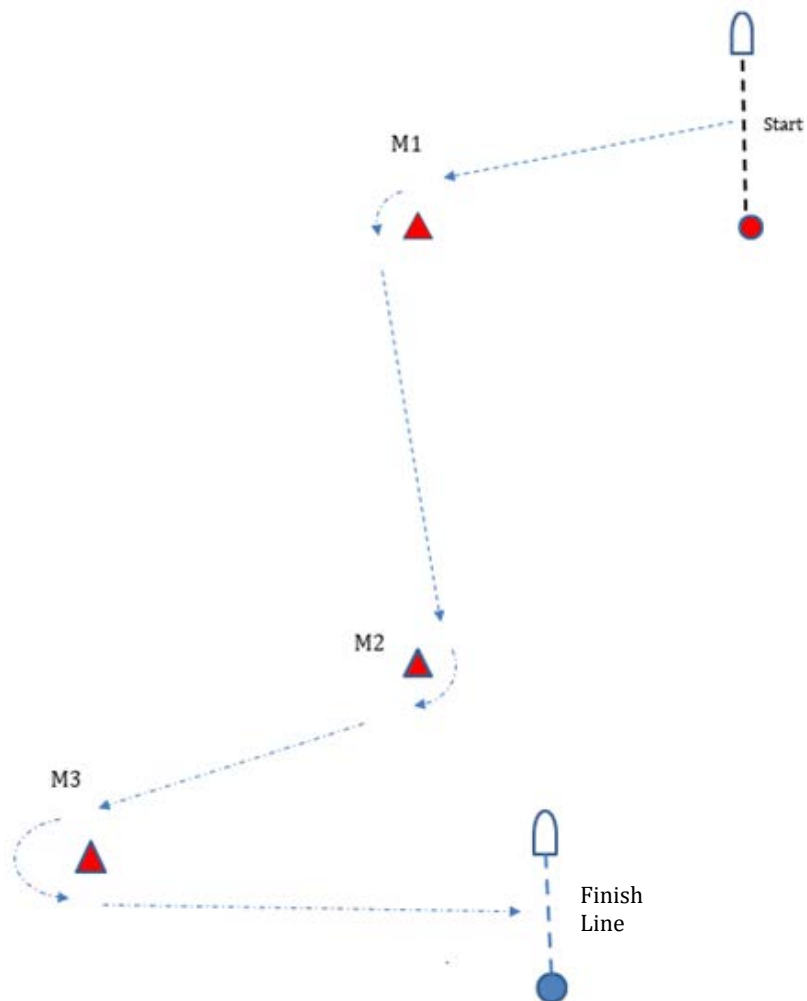
Mark M1: Red Triangular buoy

Mark G1 & G2: Red Triangular buoy

Appendix A: Slalom Downwind

Location: Area A

Class: IQ Foil, IQ Foil Jr, WindFoil, WingFoil & X-15 Wing Foil



Signal	Marking Rounding Order
Class Flag + Pennant 4	Start (Boat & Red Spherical Buoy) – M1 – M2 – M3 – Finish (Boat & Blue Spherical Buoy)

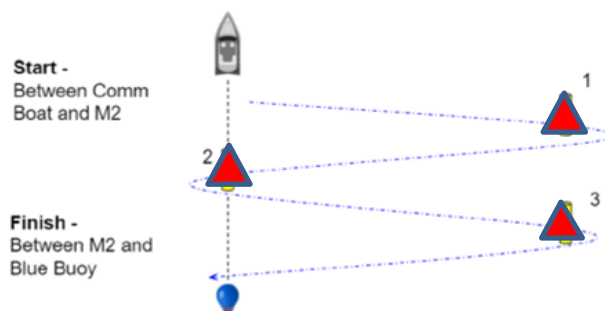
Mark M1, M2, M3: Red Triangular buoys

Appendix A: Slalom Race & Sprint Slalom Race

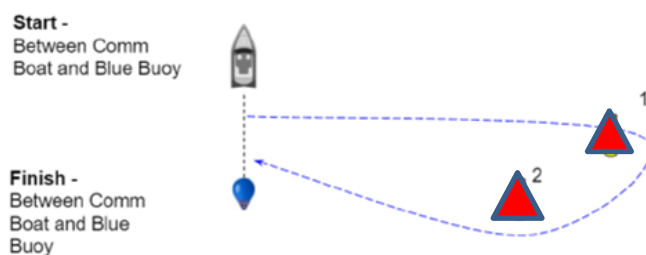
Location: Area A

Class: IQ Foil, IQ Foil Jr, WindFoil, WingFoil & X-15 Wing Foil

Slalom Race (SR) Format: Start – 1 – 2 – 3 – Finish (Target Time 5min)
 (Marks to be left to opposite sides for starboard start configuration)



Sprint Slalom Race (SSR) Format: Start – 1 – 2 – Finish (Target Time 3min)
 (Marks to be left to opposite sides for starboard start configuration)



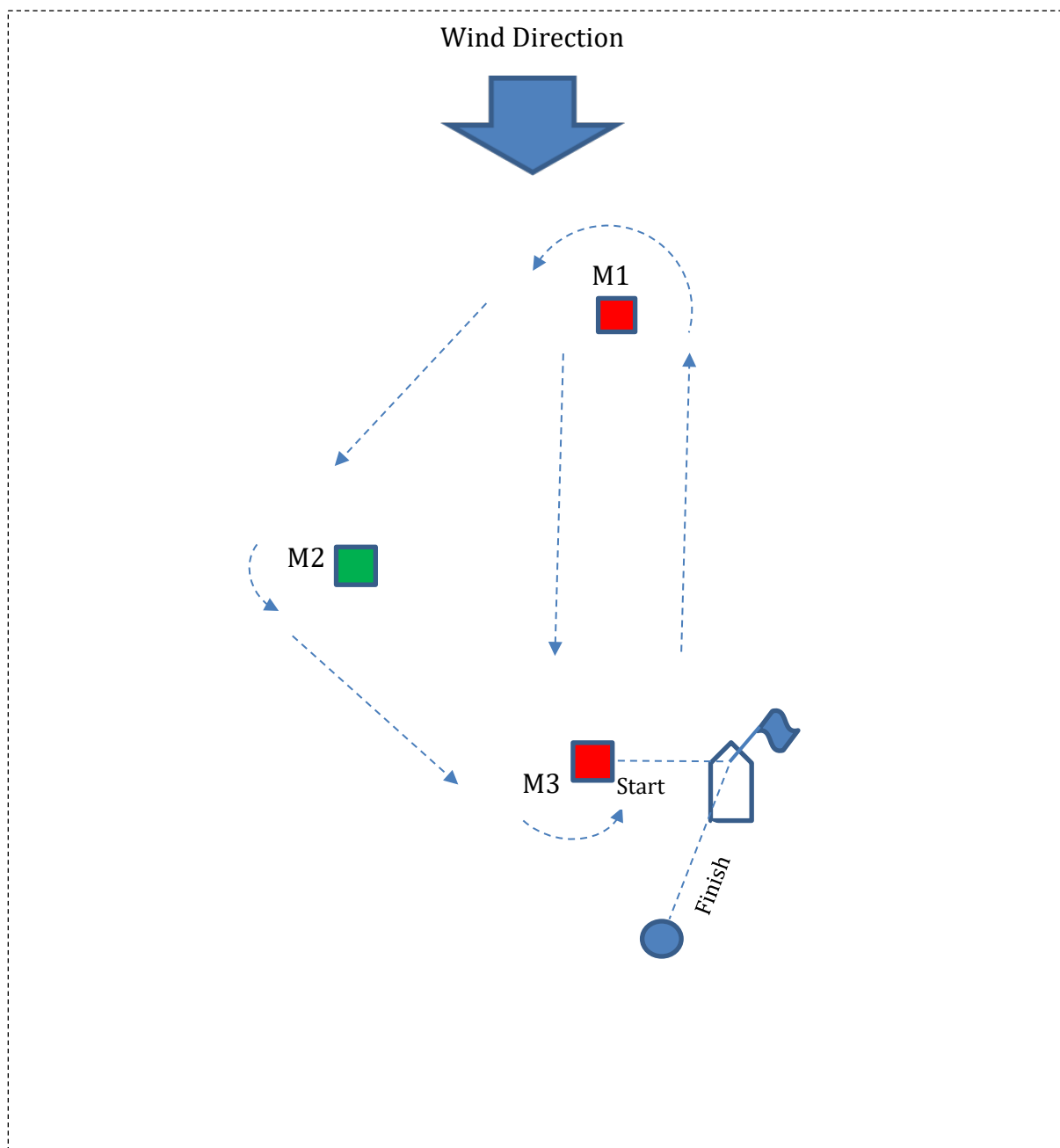
Signal	Marking Rounding Order
Class Flag + Pennant 5	Start (Boat & M2) – M1 – M2 – M3 – Finish
Class Flag + Pennant 6	Start (Boat & Blue Buoy) – M1 – M2 – Finish

Mark M1, M2, M3: Red Triangular buoys

Appendix B: Course Racing

Location: Area B

Class: Techno 293, 293+, RS:One, Windsurfer LT



Signal	Marking Rounding Order
Class Flag + Pennant 2	Start – M1 – M2 – M3 – M1 – M3 - Finish
Class Flag + Pennant 1	Start – M1 – M2 – M3 - Finish

Mark M1, M3: Red Square buoys

Mark M2: Green Square buoy